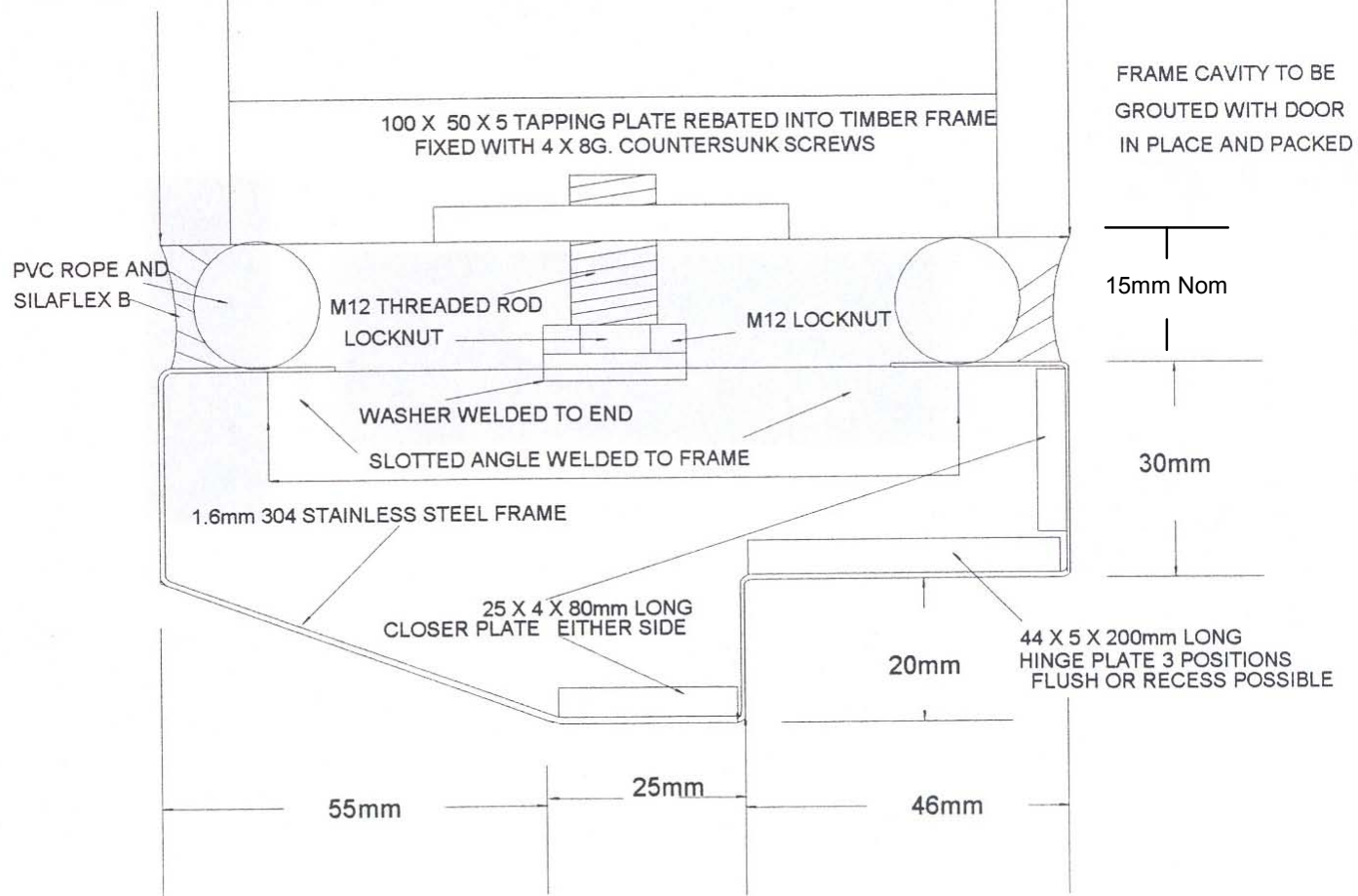



THE INFORMATION CONTAINED IN THIS DRAWING IS THE SOLE PROPERTY OF FIBREGLASS DEVELOPMENTS LTD ANY REPRODUCTION IN PART OR WHOLE WITHOUT THE WRITTEN PERMISSION OF FIBREGLASS DEVELOPMENTS LTD IS PROHIBITED.

STERIDOR TO TIMBER FRAME FIXING DETAIL



ALL NONCRITICAL DIMENSIONS ASSUMED TO HAVE $\pm 2\%$ TOLERANCE UNLESS OTHERWISE STATED
CRITICAL DIMENSIONS (MARKED *) AS DETAILED.

	UNLESS OTHERWISE SPECIFIED DIMENSIONS ARE IN MM		CAD GENERATED DRAWING DO NOT MANUALLY UPDATE		FIBREGLASS DEVELOPMENTS LTD	
			APPROVALS	DATE		
			DRAWN: BOB MURPHY	13/12/1989		
			UPDATED: FREDDY	26/07/2006		
			LATEST REVISION			
MATERIAL FIBREGLASS		STERIDOR DOOR TIMBER FIXING DETAILS				
FINISH A						
DO NOT SCALE DRAWING		DATE: 18/09/2006	SIZE A	CODE STR/TF	DWG. NO. STR/DR-3	REV. B
		SCALE	CAD FILE:			

